

# **32" ELO Style Projected Capacitive Open-Frame Monitor**

**Product:32" PCAP open-frame LCD monitor**

**Version:Ver.1.0**

**Totally compatible with ELO3243L-E304029**

# Contents

- 1.Overview**
- 2.General description**
- 3.Interface connection**
- 4.Mechanic drawing**
- 5.Package**

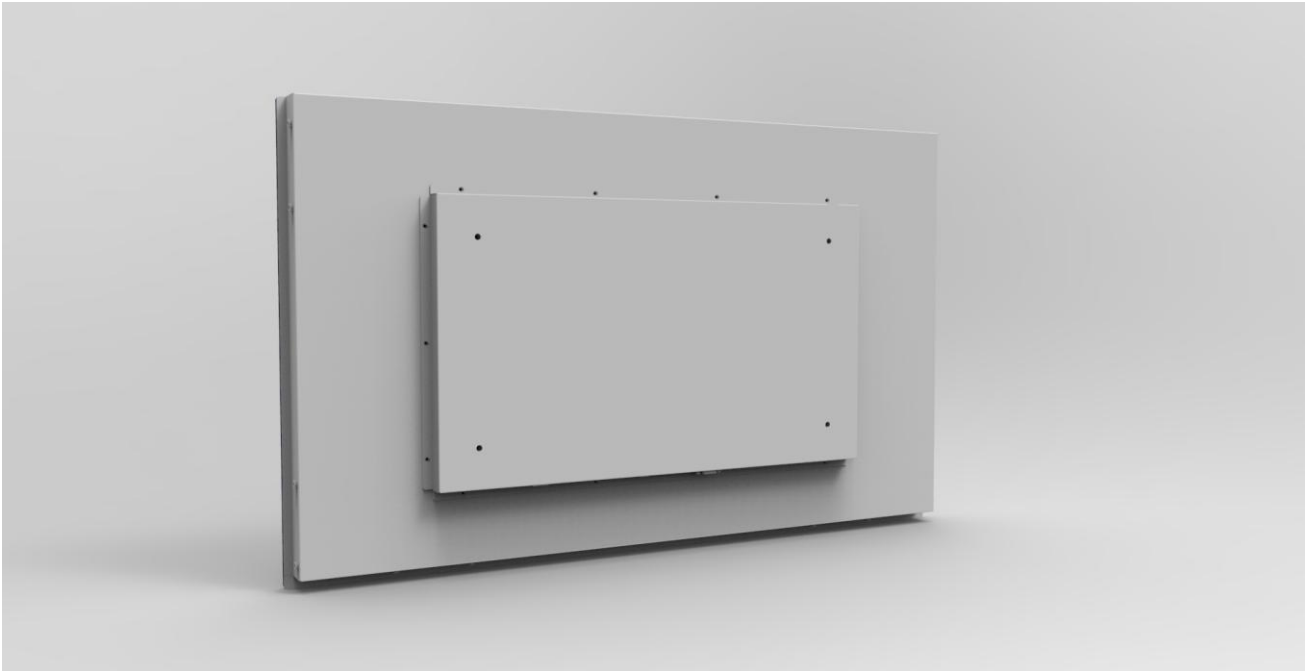
# 32" ELO Style PCAP open frame monitor

## **1)Features:**

- ◆ Standard VESA hole
- ◆ 32" 16:9 LED Backlight Monitor,1920x1080 resolution
- ◆ 1000:1 contrast ratio
- ◆ Port: VGA,DP,HDMI
- ◆ 10 points touch (PCAP),Thru Touch
- ◆ 3mm Touch Glass
- ◆ Power cord & USB Cable included
- ◆ Customized dimension
- ◆ CE, FCC

## **2) Photo**





## A. Product Data Sheet

<b>Screen diagonal dimension</b>	32 inch
<b>Viewable area W x H(mm)</b>	700.4(H)x394.9(V)mm
<b>Led Type</b>	LED
<b>Pixel Pitch</b>	0.36x0.36mm
<b>Screen Maximum Resolution</b>	1920x1080
<b>Color Depth</b>	16.7 Million colors
<b>Brightness</b>	300 cd/m <sup>2</sup>
<b>Auto Adjust</b>	Yes
<b>Monitor Aspect Ratio</b>	16:9
<b>Display Aspect Ratio</b>	OSD selectable 16:9 or 4:3
<b>Contrast Ratio</b>	1000:1
<b>Response Time(ms)</b>	5ms
<b>View Angle H/V(degrees)</b>	178°/178°
<b>Port inputs</b>	VGA+DP+HDMI+USB
<b>Speakers</b>	Optional
<b>OSD Languages</b>	English, Spanish, German, Chinese, French, Italian
<b>VESA Mounting Pattern</b>	400x200mm
<b>Net weight</b>	13.5KG
<b>Gross Weight</b>	15.2KG
<b>Power- Watts(on and standby)</b>	< 55W
<b>Power input (Built inside)</b>	100-240V,50/60Hz
<b>Operating Temperature</b>	0°C ~ 40°C
<b>Storage Temperature</b>	-20°C ~ 60°C
<b>Operating Humidity</b>	10 ~ 85%
<b>Certifications</b>	CE,FCC

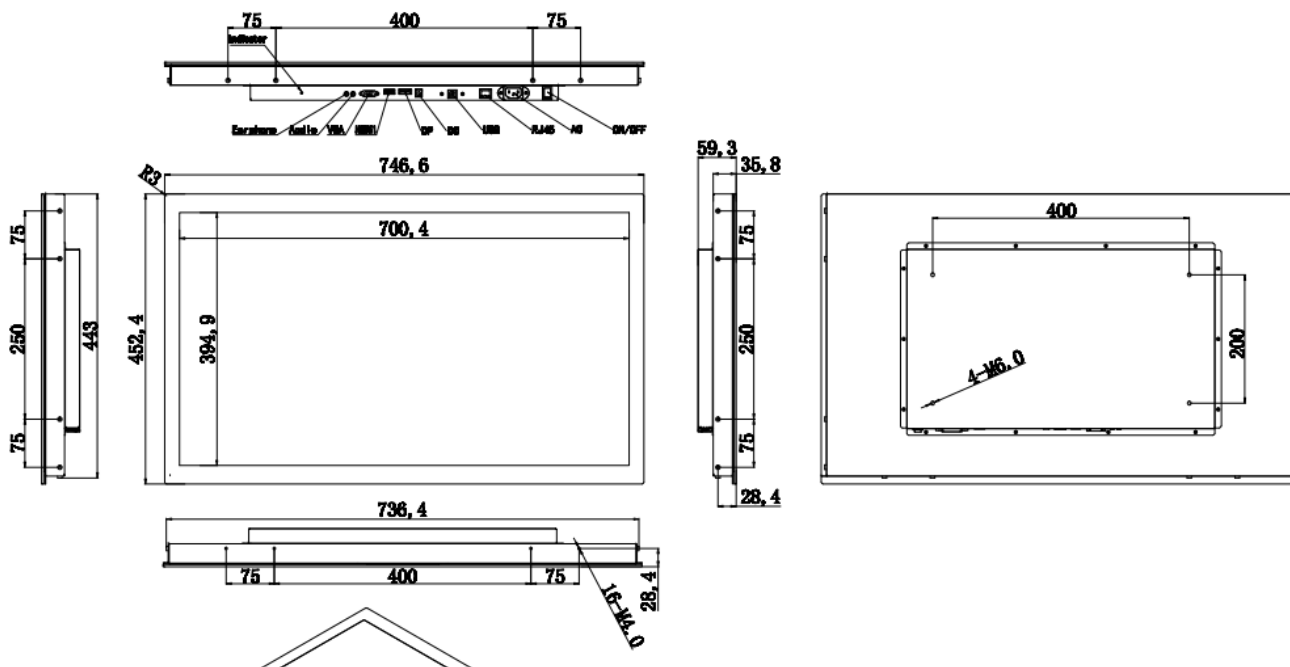
<b>Touch</b>	32"PCAP
<b>Number of touch point</b>	10 points
<b>Response time</b>	10 ms
<b>Thickness</b>	3mm
<b>Pressure endurance value</b>	<10g
<b>Transmittance</b>	>85%
<b>Surface hardness</b>	≥6H
<b>Type</b>	Projected Capacitive (PCAP) touch panel
<b>Size</b>	32 inch
<b>Interface</b>	USB

### 3.Interface description:

Touch-USB,HDMI,DP,VGA



### 4.Drawing:



**6.Package:Palletized**

