

19" ELO Style Projected Capacitive Open-Frame Monitor

Product:19" PCAP open-frame LCD monitor

Version:Ver.1.0

Totally compatible with ELO1990L-E330817

Contents

1.Overview

2.General description

3.Interface connection

4.Mechanic drawing

5.Package

1.Overview

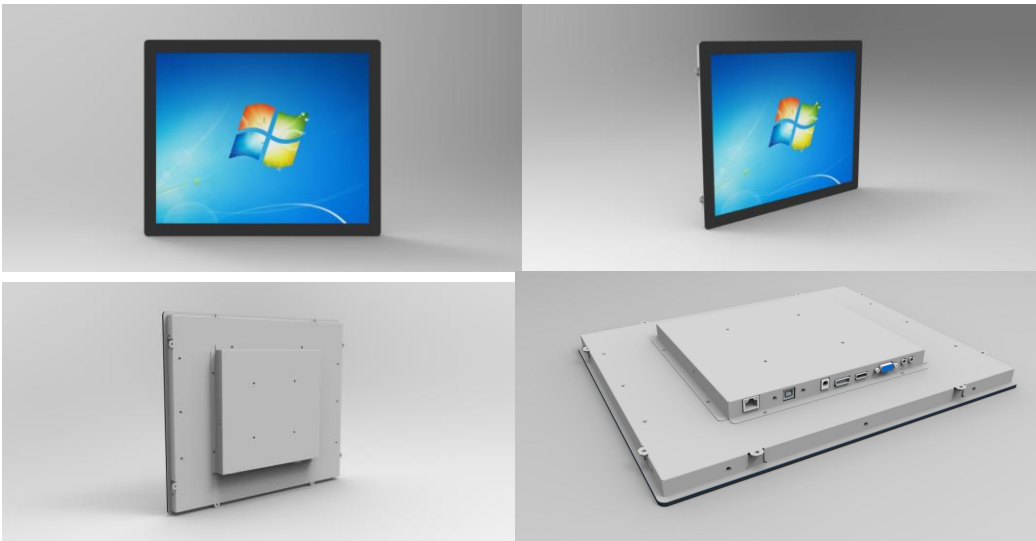
19" ELO Style PCAP open frame monitor

1)Features:

- ◆ Standard VESA hole
- ◆ 19" 4:3 LED Backlight Monitor,1280x1024 resolution
- ◆ 1000:1 contrast ratio
- ◆ Port: VGA,DP,HDMI,USB
- ◆ Projected Capacitive Touch Technology,10 multi touch,thru touch
- ◆ 3mm touch glass
- ◆ Power cord, VGA cable,USB cable included
- ◆ CE, FCC
- ◆ 2 Years Warranty

2) Photos

Projected Capacitive Touch



2. General Description:

Monitor specification

Screen diagonal dimension	19 inch
Viewable area W x H(mm)	377.9(H)x302.3(V)mm

Led Type	LED
Pixel Pitch	0.0976x0.2928mm
Screen Maximum Resolution	1280x1024
Color Depth	16.7 Million colors
Brightness	250 cd/m ²
Auto Adjust	Yes
Display Aspect Ratio	4:3
Contrast Ratio	1000:1
Response Time(ms)	5ms
View Angle H/V(degrees)	170°/160°
Port inputs	VGA+DP+HDMI+USB
Speakers	Optional
OSD Languages	English, Spanish, German, Chinese, French, Italian
VESA Mounting Pattern	100 x 100 & 75x75mm
Net weight	5.2KG
Gross Weight	6.3KG
Power- Watts(on and standby)	< 30W
Power input (External)	12V,4A
Operating Temperature	0°C ~ 40°C
Storage Temperature	-20°C ~ 60°C
Operating Humidity	10 ~ 85%
Certifications	CE,FCC

Touch Panel Specification:

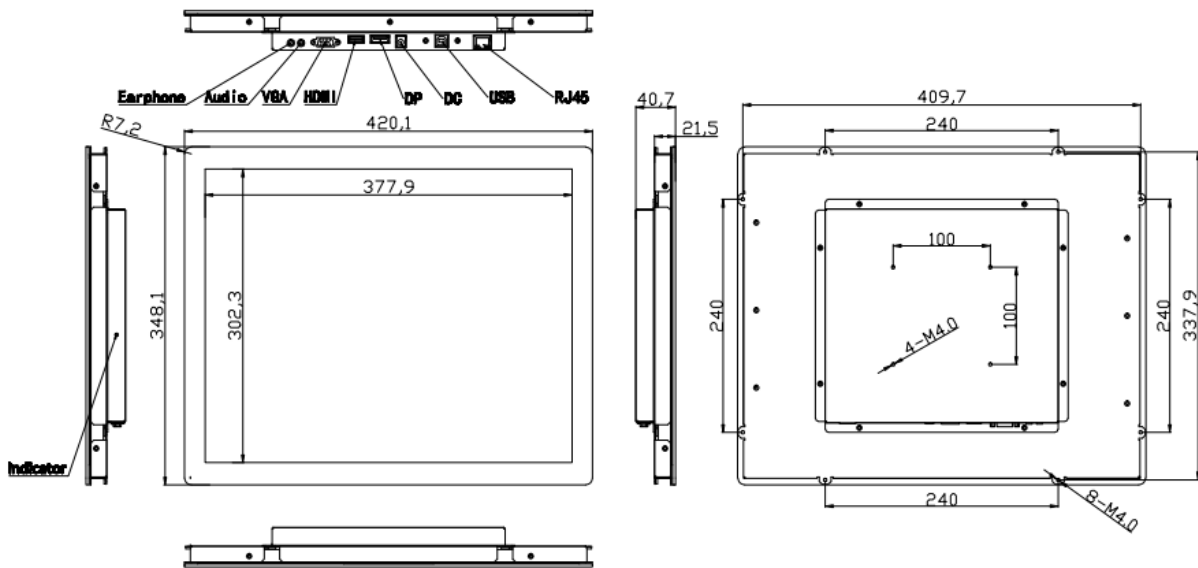
Type	19"PCAP TOUCH
Active Area	377.9(H)x302.3(V)mm
Glass Thickness	3mm toughed glass
Surface Hardness	≥ 6H
Consumption	≤ 0.5W
Touch Points	10 Touch Points
Response Time	≤ 10ms
Touch Operation	Finger or Touch pen
Complaint O/S	WinXP,Win7,Win8,Win10,Android,Linux
Transparency	≥ 85%

3.Interface description:

Touch-USB,HDMI,DP,VGA,RJ45(for OSD keypad)



4.Drawing:



5.Package

